

Technifogger

**INSTRUCTION
MANUAL**

Hygiene
Technologies
Smarter Cleaning Systems



CONTENTS

1. GENERAL	PAGE 2
2. SAFETY	PAGE 4
3. SPARE PARTS	PAGE 5
4. OPERATION	PAGE 7
5. MAINTENANCE	PAGE 7
6. TECHNICAL SPECIFICATIONS	PAGE 8

1. GENERAL

1.1 INTRODUCTION

Thank you for purchasing a Technifogger which has been developed for the application of diluted disinfectant as a fog in to the atmosphere.

The effect of this is that the disinfectant solution is applied thoroughly and evenly to all surfaces, ensuring an effective disinfection of the room including areas often missed by traditional methods.

1.2 WARRANTY CONDITIONS

For a period of 24 months from the date of delivery, your dealer will honour a warranty on parts that do not function properly due to material defects or manufacturing faults. The warranty is reduced to 12 months on wearing parts (highlighted in the section on spare parts). The warranty will cover replacement or repair of the defective part. Costs with regard to dismantling, forwarding and reassembly are defrayed by the purchaser. Any return shipments from the dealer following completed repairs are defrayed by the dealer. The defective parts remain the property of the dealer. Claims that may be made for legal reasons, ordinary wear and tear, as well as damage to parts that can be attributed to negligent or improper handling are not covered by the warranty.

The warranty will be void if the Technifoamer has been exposed to frost. The warranty will also be void if modifications or repairs have been carried out by unauthorised personnel. Warranty claims will only be accepted if they are reported to the dealer immediately after damage has been discovered. The warranty is terminated if there is a change of ownership of the machine. The manufacturer and its dealers cannot be held liable for personal injury, damage to equipment, loss of earnings, including production losses, losses to stock or similar that may have arisen as a result of defects or delayed delivery of the sold product, irrespective of the cause, including manufacturing faults or material defects. In addition, please refer to our general terms and conditions of sales and delivery.

1.3 PROTECTION FROM FROST

The technifogger must never be exposed to frost as may cause damage to the equipment.

Declaration of conformity

We declare that the Technifogger is in conformity with the following EU directives:
Machinery Directive 2006/42/EC

And further conform with the following EU Harmonised Standards:
EN ISO 1200:2010 & EN 809:1998+A1:2009

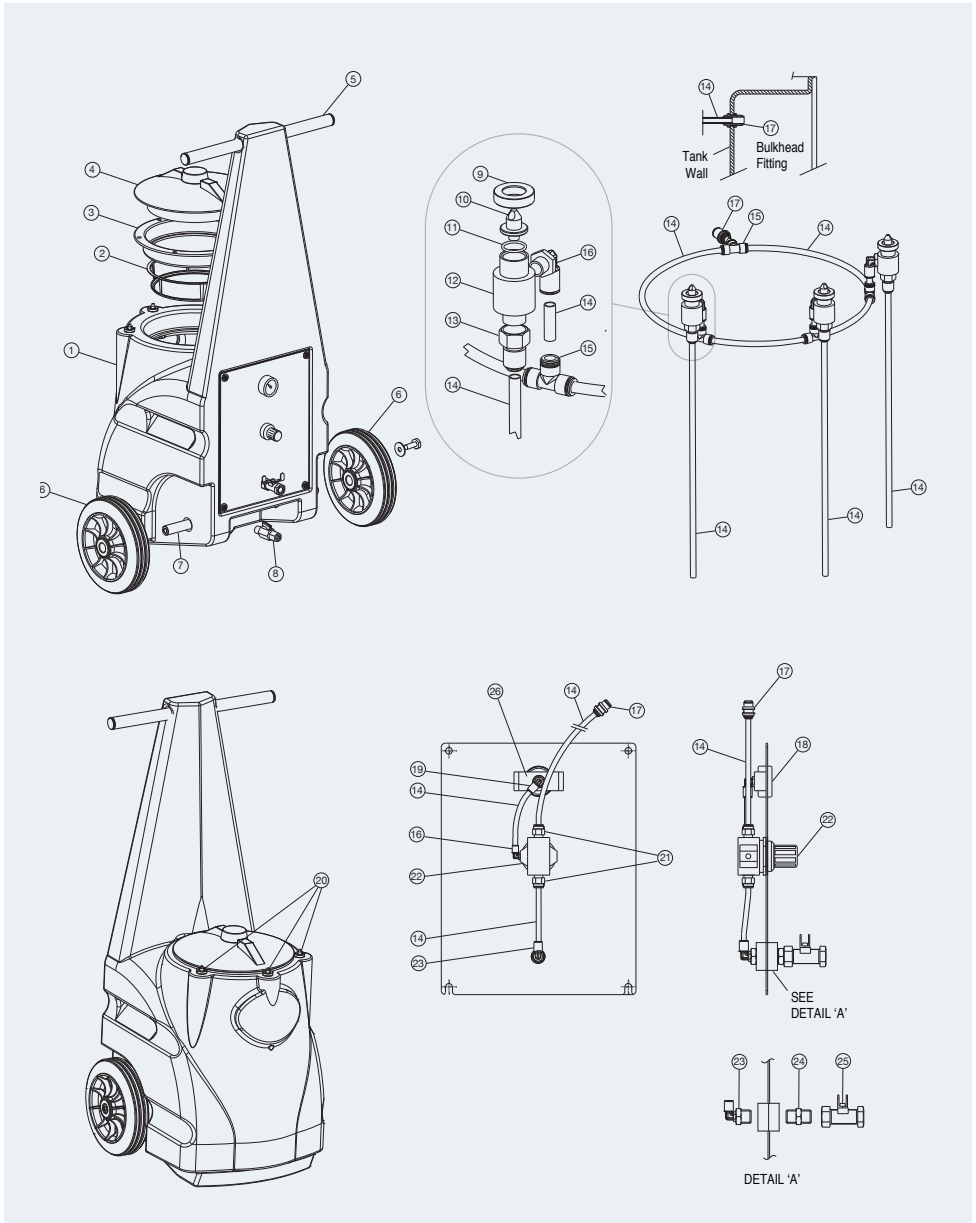


Managing Partner

2. SAFETY

- 2.1 CAUTION. The Technifogger produces atomised moisture and sprays it in to the atmosphere. In certain cases this can be extremely harmful to the respiratory system depending on the chemicals being used. A clear exit route must be established before switching on the equipment.
- 2.2 Please observe these safety instructions in conjunction with the safety instructions provided with the cleaning chemicals being used.
- 2.3 Always wear protective clothing in accordance with the instructions provided with the cleaning chemicals being used.
- 2.4 Do not attempt to start using the equipment until you have fully read and understood these instructions.
- 2.5 Ensure that the unit is not being used near to any electrical equipment.
- 2.6 Always ensure that the chemical is correctly diluted according to the chemical manufacturers instructions. NEVER use the technifogger to apply undiluted chemical.
- 2.7 Only use disinfecting chemicals which are approved by the chemical supplier to be safe for fogging applications, and approved for use in the food and agricultural industries. Chemicals which are classified as highly corrosive, aggressive, toxic or pose a health risk to humans or animals must not be used.
- 2.8 The equipment must not be used with solvents or volatile liquids which pose a fire risk.

3. SPARE PARTS



3. SPARE PARTS

POSITION	DESCRIPTION	ORDER CODE
1	Technifogger Red Tank	50000481
1	Technifogger White Tank	50000485
1	Technifogger Blue Tank	50000482
2	Technifogger Basket Filter	50000440
3	Technifogger Lid Ring	50000439
4	Technifogger Lid	50000441
5	Technifogger 40 handle	50000483
6	Technifogger Hygienic Wheel	50000442
7	Technifogger 40 st st axle	50000480
8	1/2 st st twist grip valve	50000479
9	Fog Nozzle ring	50000490
10	Fog Nozzle	50000491
11	Nitrile O Ring For Fog Nozzle	50000936
12	Fog nozzle body	50000492
13	1/4 fm - 6mm push fit adaptor	50000493
14	Technifogger tube kit	50000494
15	6 x 6 x 6mm push fit tee	50000495
16	1/8m - 6mm push fit elbow	50000497
17	6mm bulkhead fitting	50000498
18	Panel mount gauge*	50000499
19	1/8 fm - 6mm push fit elbow	50000500
20	1/2 st st lock nut	50000501
21	1/4m - 6mm push fit adaptor	50000476
22	Technifogger Air Regulator*	50000402
23	1/4m - 6mm push fit elbow	50000473
24	1/4-1/4 SS LP Adaptor	70404100
25	1/4 St St Ball Valve (TF Air Inlet)	50000472
26	Pressure Gauge Bracket	50000496

* Wearing parts

4. OPERATION

START UP, USE & CLOSE DOWN

- 4.1 The size of areas which can be fogged by one unit vary depending on humidity, air pressure and liquid viscosity. It is the responsibility of the operators and management to ascertain the effectiveness of the fogging unit by running their own trials including any relevant surface testing, in conjunction with the chemical supplier.
- 4.2 The Technifogger requires a clean, compressed air supply delivering 150-300L of compressed air at 3-6 bar pressure.
- 4.3 Ideally the air supply should be isolatable from outside of the area being treated so that the fogger can be turned off during discharge if needed.
- 4.4 Ensure that the area to be fogged is well prepared and that anything that must not be subjected to fog is isolated, covered or removed.
- 4.5 Ensure that all personnel have vacated the area.
- 4.6 Decide what quantity of chemical solution is to be discharged in to the room.
- 4.7 Fill the Technifogger with the desired quantity of pre diluted chemical solution. Bear in mind that normally all of the solution will be discharged in one application.
- 4.8 Connect Technifogger to a compressed air line
- 4.9 Switch on compressed air line and set the regulator on the back plate until the pressure gauge reads 4 bar, or until desired fog dryness is reached.
- 4.10 Vacate the area and close the exit door
- 4.11 Ensure that the area has been suitably cordoned off in accordance with site rules so that persons cannot inadvertently enter the area during application.
- 4.12 Once solution has been completely discharged, wait until the fog has completely cleared before re entering the area.
- 4.13 Switch off air supplies and remove equipment from area.
- 4.14 If the area is fitted with an extraction system we would recommend this is switched off during use and switched back on immediately after fog application.
- 4.15 Remove any cordons and hazard warning signs which were put in place at 4.11.

5. MAINTENANCE

EVERY DAY

- 5.1 After every use run the unit with clean water only in the tank to thoroughly rinse chemicals out of the nozzle system, to avoid nozzle malfunction due to chemical residue.

6. TECHNICAL SPECIFICATIONS

Air	Inlet Connection	1/4" bspfm
	Max inlet pressure	6 bar
	Min inlet pressure	4 bar
	Consumption	250-300 l/min
	Particle size	Sub micron - 100 micron
	Room size	Up to 1,600 m3, 5m ceiling height
Accessories	Max Hose length	N/A
Weight and dimensions	Weight (empty)	12kg
	Height (mm)	965 mm
	Width	400 mm
	Depth	400 mm
	Capacity	40 Litres



**Hygiene
Technologies**
Smarter Cleaning Systems

Freephone: 0800 REALCLEAN (0800 732 525)

Telephone: 064 6 876 4111

Email: info@hygienetech.co.nz

Web: www.hygienetech.co.nz

